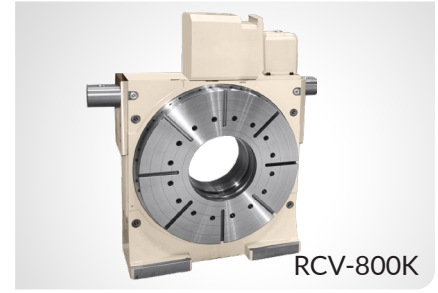


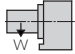

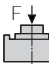
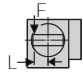
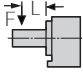
RCV-800K, 1000K, 1250K, 1600K

HIGH CAPACITY • LARGE THRU HOLE

The RCV-Series rotary tables feature an extra large thru hole for accommodating large workpieces. The RCV-800 can be equipped with either an 800mm or an optional 1,000mm face plate, and the RCV-1000 can hold either a 1,000mm or an optional 1,200mm face plate.



RCV-800K

Table Model		RCV-800K	RCV-1000K	RCV-1250K	RCV-1600K	
Table diameter (optional)	mm	800 (1,000)	1,000 (1,200)	1,250 (1,500)	1,600	
Center height	mm	530	625	775	950	
Center bore	Nose Diameter	mm	360H7 x 45	410H7 x 75	500H7 x 25	670H7 x 65
	Thru Diameter	mm	310	360	450	-
Table T-slot width		18H7	22H7	22H7	28H7	
Guide block width		22h7			22h7	
Servo motor (Fanuc)*		Alpha 12i	Alpha 22i	Alpha 22i	Alpha iF22	
Maximum motor speed	rpm	4,000	3,000			
Speed reduction ratio		1/360		1/720		
Maximum table speed	rpm	11.1	8.33	4.16	4.17	
Inertia converted into motor shaft	$\times 10^{-3}\text{kg}\cdot\text{m}^2$	4.89	12.2	5.04	6.14	
Clamp system**		Hydraulic				
Clamp torque @500psi	Nm (ft. lbs.)	7,000 (5,159)	20,000 (14,740)	33,000 (24,321)	41,000 (30,217)	
Indexing accuracy	arc sec.	± 7.5				
Net Weight	kg (lbs.)	1,450 (3,190)	2,500 (5,500)	4,850 (10,670)	7,200 (15,840)	
Allowable wheel torque	Nm (ft. lbs.)	7,840 (5,778)	13,230 (9,751)	25,000 (18,425)	25,000 (18,425)	
Allowable work inertia	$\text{kg}\cdot\text{m}^2$	120	874	2,374	6,400	
Allowable work weight	 kg (lbs) [w/ tailstock]	2,000 (4,400) [4,000 (8,000)]	3,500 (7,700) [7,000 (15,400)]	6,300 (13,860) [13,860(30,492)]	10,000 (22,000) [20,000 (44,000)]	
	 kg (lbs)	4,000 (8,800)	7,000 (15,400)	13,860 (30,492)	-	
Allowable load when table clamped	 N (lbf)	100,000 (22,400)	185,000 (41,440)	383,000 (85,792)	754,000 (168,896)	
	 Nm (ft. lbs.)	7,000 (5,159)	20,000 (14,740)	33,000 (24,321)	41,000 (30,217)	
	 Nm (ft. lbs.)	11,600 (8,550)	22,900 (16,877)	56,700 (41,788)	153,000 (112,761)	

* Other motors & RPM available

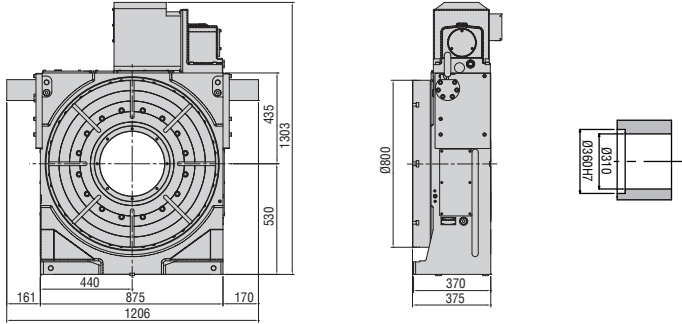
** Booster optional

Specifications subject to change without notice

Dimensions

Drawings not to scale • Dimensions = mm

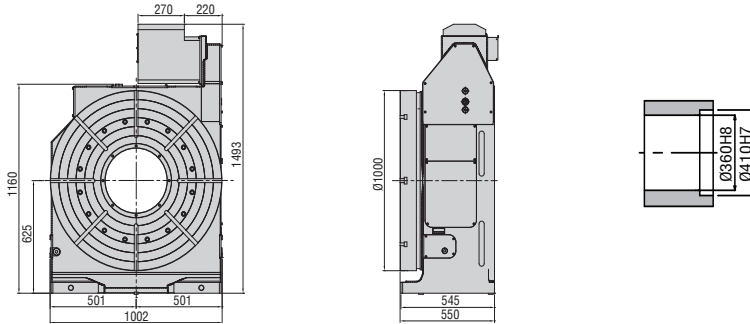
RCV-800K



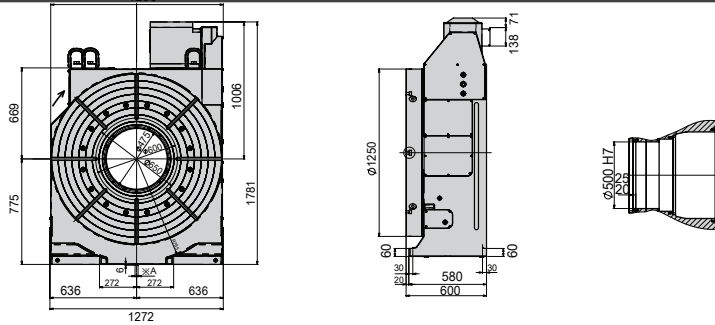
• RCV-800K



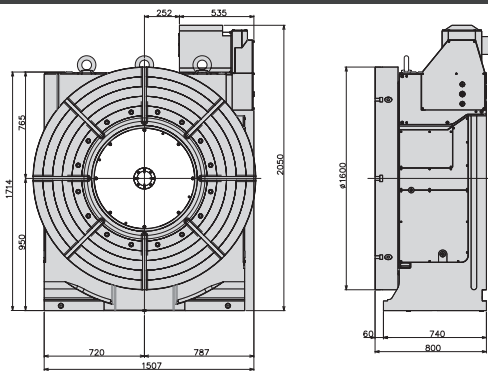
RCV-1000K



RCV-1250K



RCV-1600K



Options & Accessories

TPC NC Controller	p.62
Chucks	p.74
Tailstock	p.75
Support Spindle	p.77
Face Plate	p.77
Encoder / Scale	p.78
Pull Stud Device	p.79
Rotary Joint	p.79
Booster	p.80
PVC or Steel Cables	p.81

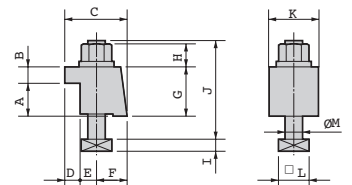
The dimensions above are for tables with a FANUC servo motor. Other motors available (dimensions may increase).

Clamping Block and Bolt

Dimensions = mm

Type	Q'ty	T-Slot Width	A	B	C	D	E	F	G	H	I	J	K	L	M	
RCV-800K	II	4	22	60	28	95	29	16	50	88	27	13	145	100	32	20
RCV-1000K	II	4	22	60	28	95	29	16	50	88	27	13	145	100	32	20
RCV-1250K	II	8	22	60	28	95	29	16	50	88	27	13	145	100	32	70
RCV-1600K	II	8	22	70	32	98	29	16	60	105	27	13	160	100	32	20

Type II



Note: When using a machine with a T-slot pitch other than the above, use suitable clamping blocks and bolts that are available on the market, or order custom-made ones from KOMA (opt.)